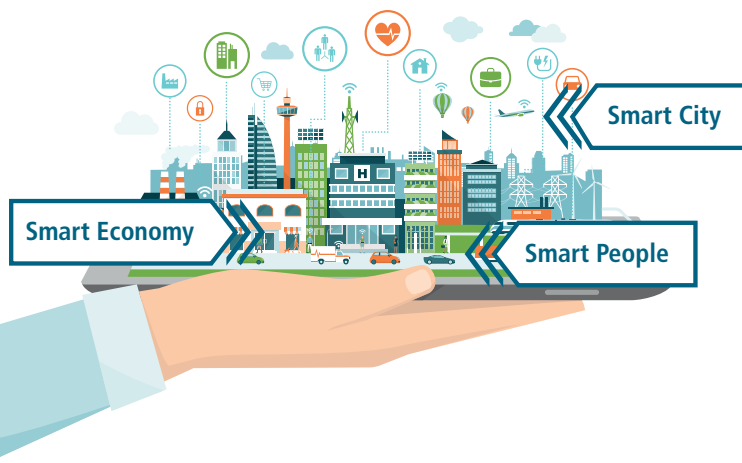


## What is mySMARTLife about?

The mySMARTLife project aims at making the three Lighthouse Cities of Nantes, Hamburg and Helsinki more environmentally friendly by reducing their CO<sub>2</sub> emissions and increasing the use of renewable energy sources.

Activities are focusing on "Inclusive Cities", offering a high quality of life to residents. "Smart People" are playing a vital role in their city's development. "Smart Economy" is an innovative and dynamic economic concept aiming at guaranteed employment and an adequate income, attracting talents as well as providing goods and services.

An integrated planning process, where citizens are actively involved in the decision making, links the actions in different fields (e.g. mobility, sustainable energy, ICT). Following a structured city business model leads to an integrated urban transformation strategy, which is transferrable to other cities.



## mySMARTLife Interventions

Within the three Lighthouse Cities, more than 150 demonstration actions will be carried out, ranging from technical actions (refurbishments of buildings, usage of renewable energies, clean transport and supporting ICT solutions) to social / non-technical actions (citizen engagement, development of innovative business models).

## Partners

[TECHNOLOGY CENTRE] CARTIF

ARMINES

Hamburg

enercity  
contracting

ENERGIE NETZ  
HAMBURG AG

VTT

SALUSFIN  
"Smart Living Company"

tecnalia Inspiring  
Business

BYDGOSZCZ

Nantes  
Métropole

Cerema

HCU HafenCity Universität  
Hamburg

T . .

Helsinki

HELEN

Metropolia  
University of Applied Sciences

nobatek INEF4  
INSTITUT POUR LA TRANSITION ÉNERGÉTIQUE



ENGIE

ENEDIS  
L'ELECTRICITE EN RESEAU

HAW  
HAMBURG

konsalt  
Gesellschaft für Stadt- und Regional-  
analysen und Projektentwicklung mbH

FORUM  
VIRIUM  
HELSINKI

FOURDEG

STEINBEIS-  
EUROPA-  
ZENTRUM

ESADE  
Ramón Llull University

Ayuntamiento  
de Palencia

## mySMARTLife Cities Network

Besides the mySMARTLife Lighthouse and Follower Cities, 16 cities from Europe and beyond exchange experiences and learn directly from the mySMARTLife findings and results. Together, they build up the mySMARTLife Cities Network, a strong network of cities, to make their cities smarter and more sustainable.

## Contact

**Project Coordinator:** Rubén García Pajares, CARTIF Technology Centre  
mysmartlife@mysmartlife.eu

**Learn more:**  
www.mysmartlife.eu

**Join us at:**  
@mySMARTLife\_eu  
mySMARTLife Project



Photo credits: Nantes: Nantes Métropole | Hamburg: www.mediaserver.hamburg.de/J. Modrow | Helsinki: J. Salonen | Bydgoszcz: R. Sawicki | Rijeka: City of Rijeka | Palencia: Koninklijke Philips N.V., 2014 & Ayuntamiento de Palencia

Nantes

Hamburg

Helsinki



**Transition of EU cities towards  
a new concept of Smart Life  
and Economy**

**3 Lighthouse Cities • 3 Follower Cities •  
27 Partners • 6 Countries**



This project has received funding from the European Union's Horizon 2020 research and innovation programme under grant agreement No 731297.

## A taster of some of the innovative mySMARTLife interventions

### Smart E-Busway XXL in Nantes

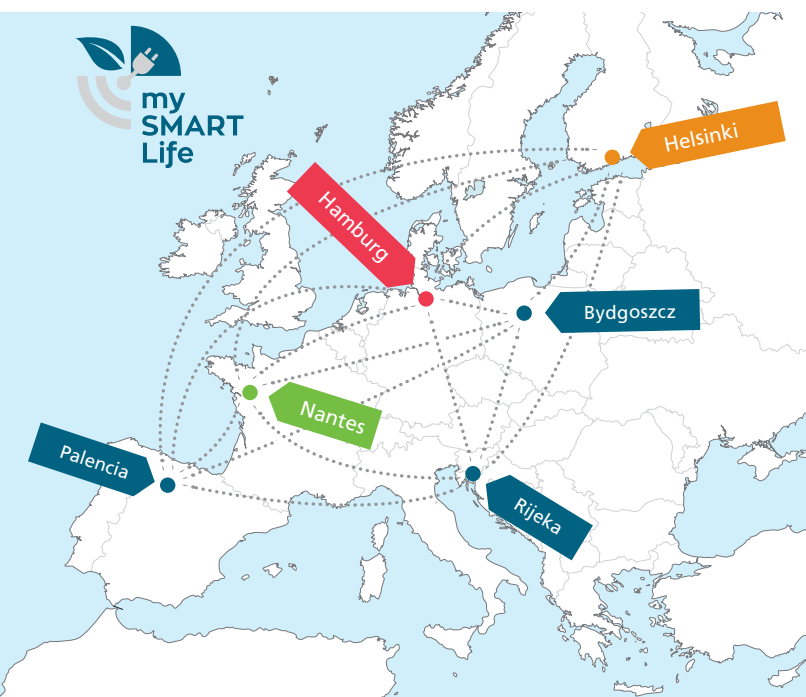
In Lighthouse City Nantes, high capacity e-buses on a bus rapid transit (BRT) line were deployed. By acquiring 22 E-busways (24m long, 150 passengers, 100% electric) and developing an energy management system completely transparent for the bus line operation, Nantes responds to the citizens' high demand for efficient public transport and tackles climate change at the same time.

### Smart Mobility in Hamburg

Although the mobility interventions affect the whole City of Hamburg, they are a focus activity in the Borough of Bergedorf. Here, e-buses, e-cars, e-bikes for public and private fleets are implemented as well as smart e-bus charging stations at the bus depot and a set of private and public charging stations for e-cars.

### Smart Grid and Buildings in Helsinki

As part of mySMARTLife, Helsinki is promoting the transition towards decentralised energy production and is increasing the share of renewable energy sources. Activities focus on the construction of a high-performance residential zone, smart home solutions, smart building solutions and the integration of renewable energy sources for example to the e-mobility charging network.



## The Lighthouse Cities



### Nantes – Smart urban transformation for citizens

Nantes is the sixth largest city of France with a metropolitan area of over 600,000 inhabitants. As part of mySMARTLife, Nantes has 47 actions from smart lighting and smart charging stations to an urban ICT platform and an energy datalab which contribute to its energy transition roadmap set up in 2018, based on the results of a large citizen engagement process.



### Hamburg – More liveable space in a growing city

The Free and Hanseatic City of Hamburg is the second largest city in Germany with 1.8 million inhabitants and a dynamic growth. To create new ideas for a liveable city, Hamburg develops innovative solutions from smart street lights, the use of hydrogen for cogeneration of heat and power in a residential area to climate friendly logistics concepts.



### Helsinki – Together towards a smart and sustainable city

Helsinki, the capital of Finland, has a population of over 650,000 inhabitants. The mySMARTLife project with its 47 actions is a major step towards Helsinki's target to become carbon neutral in 2035.

## The Follower Cities

Three Follower Cities – Bydgoszcz (Poland), Rijeka (Croatia) and Palencia (Spain) – will directly learn from the Lighthouse Cities' experiences and set up their own urban transformation plans.

### Bydgoszcz (Poland) – Continuous engagement towards a smart future

Bydgoszcz is located in northern Poland, facing the rivers Brda and Vistula and has almost 360,000 residents. Due to Bydgoszcz's engagement in various European programmes, numerous smart solutions have already been implemented. One example is an intelligent transportation system which steers traffic through vision-based monitoring.



### Rijeka (Croatia) – On the way to transformation with modern ICT infrastructures

Situated at the Adriatic Sea, Rijeka is the third largest city in Croatia, with a population of 128,624 residents. Over the last decade, Rijeka has put strong efforts into urban development projects, particularly into the use of renewable energy sources in public transportation.



### Palencia (Spain) – Transferring successful big scale solutions to a smaller scale

Palencia is located in the North-Northwest region of Spain and has 80,000 residents. The city has been a pioneer in implementing electric car-sharing and in replacing its municipal fleet with electric vehicles (EV), it promotes public EV charging points and fosters cyclists mobility through bike rental and dedicated cycle paths.

